



# CUBIT

the natural estimator

## Installation Guide

## Before you start

This Installation Guide is intended for the installation of a standalone licence of Cubit 7, or to update your existing Cubit, or BT2, to Version 7.

You will be required to download the install files. If you have not received the install files, they can be obtained from Buildsoft Support anytime by submitting a Ticket via [buildsoft.com.au/support](http://buildsoft.com.au/support).

## System Requirements

	Minimum	Recommended
<b>Intel Processor (or AMD equivalent)</b>	Intel Dual Core 1.86 GHz	I7 2.6 GHz
<b>Memory</b>	4 GB Ram	8-16 GB Ram
<b>Dedicated Graphics Card</b>	256 MB Ram. Supporting Open GL 2.0 or higher	2 GB Ram. Supporting Open GL 2.0 or higher
<b>Hard Drive Space</b>	1 GB free space	4 GB free space

**Supported Operating Systems (32bit and 64bit):** Windows Server 2008 or greater for server installations or Windows 7 or greater for desktop installations.

The **Minimum** and **Recommended** specifications are guidelines, if dealing with large plans and models you may need to exceed recommended specification to use them.

If you are concerned with performance, contact the **Buildsoft Support Team** through creating a ticket at [buildsoft.com.au/support](http://buildsoft.com.au/support) or via e-mail to [support@buildsoft.com.au](mailto:support@buildsoft.com.au)

### IMPORTANT:

**You cannot revert to a previous version of Cubit.**

**It is strongly recommended that you backup information in Cubit before proceeding with the installation process.**

## Understanding your Licence

The two main licence types for Cubit users: **Floating** and **Fixed**. The different licence types can affect how your **Cubit** works. There are two ways to activate a licence, **Online** and **Offline**.

### Fixed Licence

A **Fixed Licence** is fixed to a single user of a computer, to change this you will need to uninstall **Cubit**.

### Floating Licence

A **Floating Licence** is unrestricted by user or computer, however only one licence can be in use at any one time. You can deactivate and reactivate a **Floating Licence** from **Cubit**.

From **Cubit Options**, you can enable **Release on Exit**, which will automatically deactivate your Cubit licence when you close **Cubit** and, as long as you aren't using that licence elsewhere, will automatically reactivate when you open **Cubit**.

### Online Activation

**Online Activation** is the default and recommended method for activation, it will automatically register and activate **Cubit** for immediate use. An active internet connection is required.

### Offline Activation

**Offline Activation** is not recommended because you will need to contact Buildsoft and will need to complete a manual activation. When using **Cubit** offline you will not be able to use **Release on Exit**.

**To upgrade from a Fixed Licence to a Floating Licence, contact the Buildsoft Sales Team.**

## Table of Contents

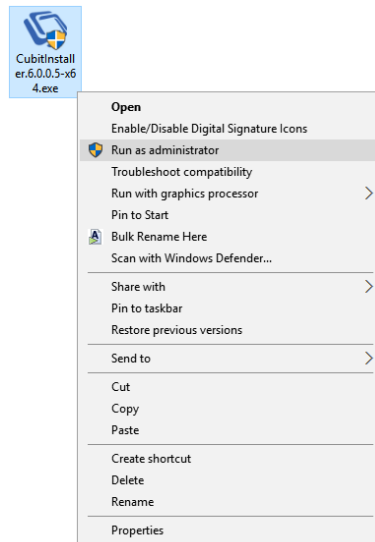
<b><u>Installation Guide (Standalone User)</u></b>	....	<b>Page 4</b>
This guide will walk you through installing a Standalone User Cubit onto your computer for the first time		
<b><u>Software Update Guide</u></b>	....	<b>Page 11</b>
This guide will walk you through updating an existing Cubit or BT2 to the latest version of Cubit and backing up your saved information		
<u>Exporting a Job</u>	....	<b>Page 11</b>
Steps to export a Job from Cubit		
<u>Exporting a Database</u>	....	<b>Page 12</b>
How to export your entire Cubit database		
<u>Update Installation Guide</u>	....	<b>Page 15</b>
Guide to update your BT2 or Cubit to the latest version		

## Installation Guide (Standalone User)

These instructions will guide you through installing Cubit onto your computer for the first time.

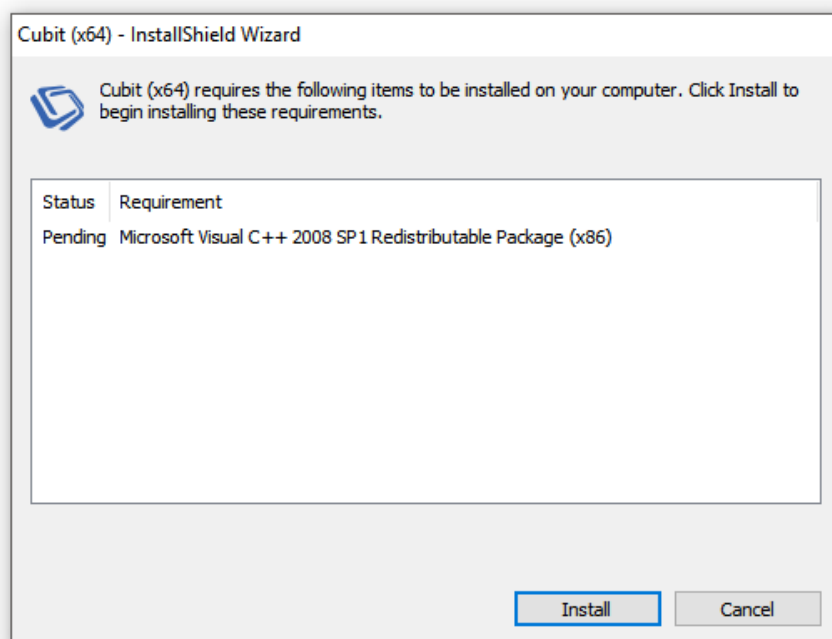
1. Right mouse click on the desktop icon and select **Run as administrator** to open the installer.

*Fig 1 – Run as Administrator*



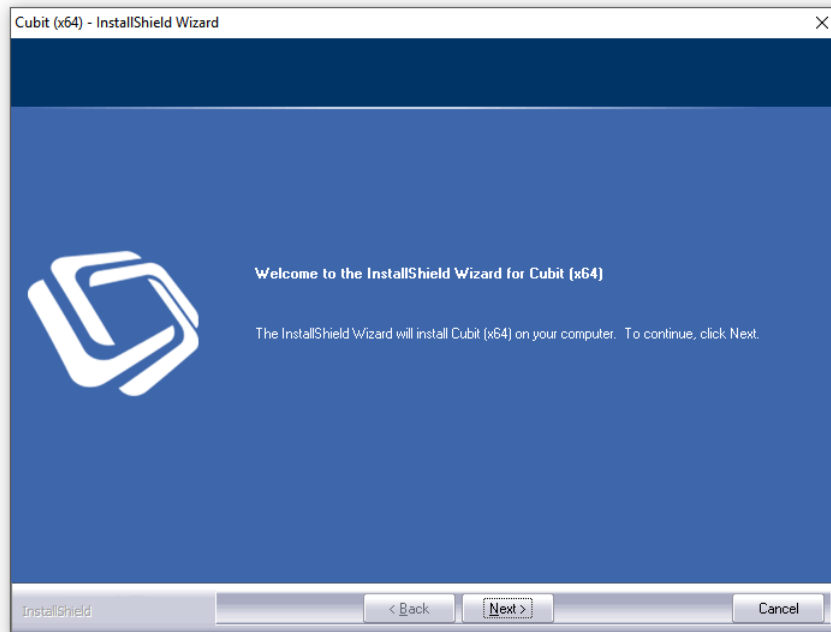
- a. You may encounter a prompt to install **Microsoft Visual C++ Redistributable Package**. If prompted, click **Install** to continue your installation.

*Fig 1a – Microsoft Visual C++ Redistributable Package Installer*



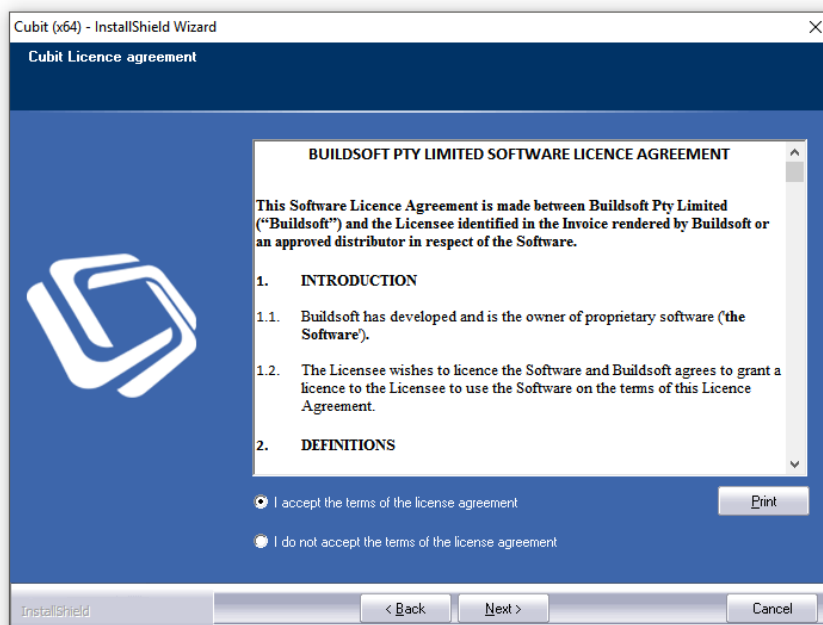
- The first page of the installer is the welcome page. Click **Next** to continue.

*Fig 2 – Installer Welcome Screen*



- Please read the **Cubit Licence Agreement** before selecting **I accept the terms of the licence agreement**. Click **Next** to continue.

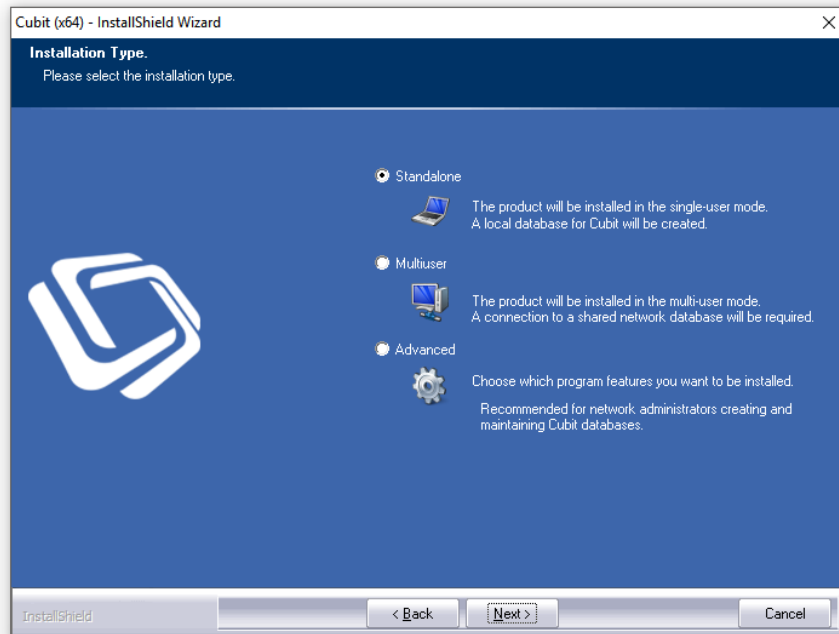
*Fig 3 – Cubit Licence Agreement*



- By default, the **Standalone** option is selected. Click **Next** to continue.

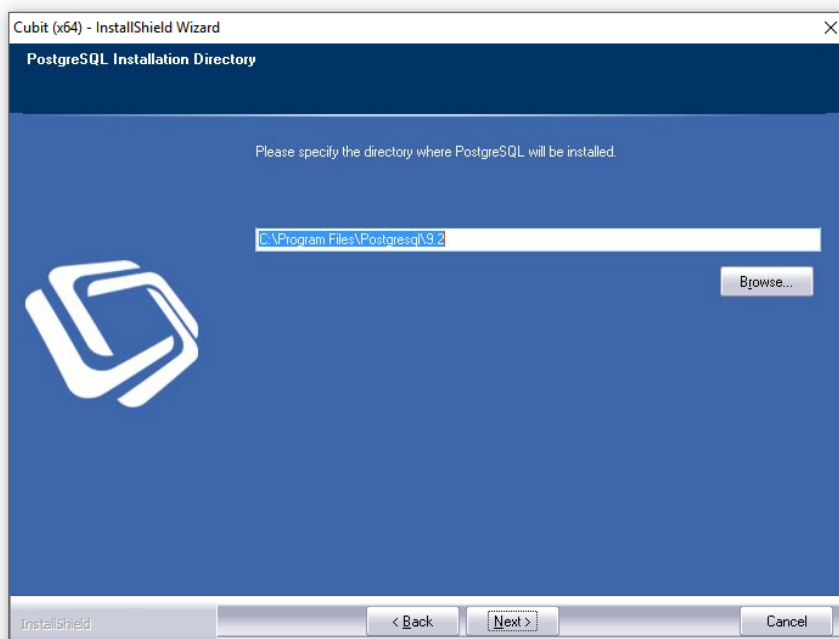
**Note:** For Multi-user option, please refer to [Installation Guide \(Network Client User\)](#)

*Fig 4 – Installation Type*



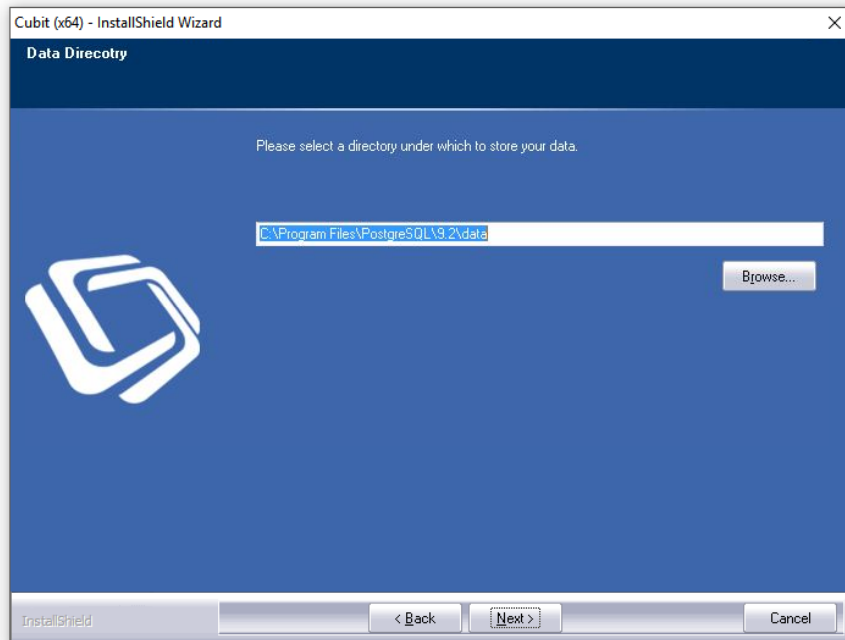
- You will be prompted to select a location for **PostgreSQL** to be installed. Select a location, or leave the default. Click **Next** to continue.

*Fig 5 – PostgreSQL Installation Directory*



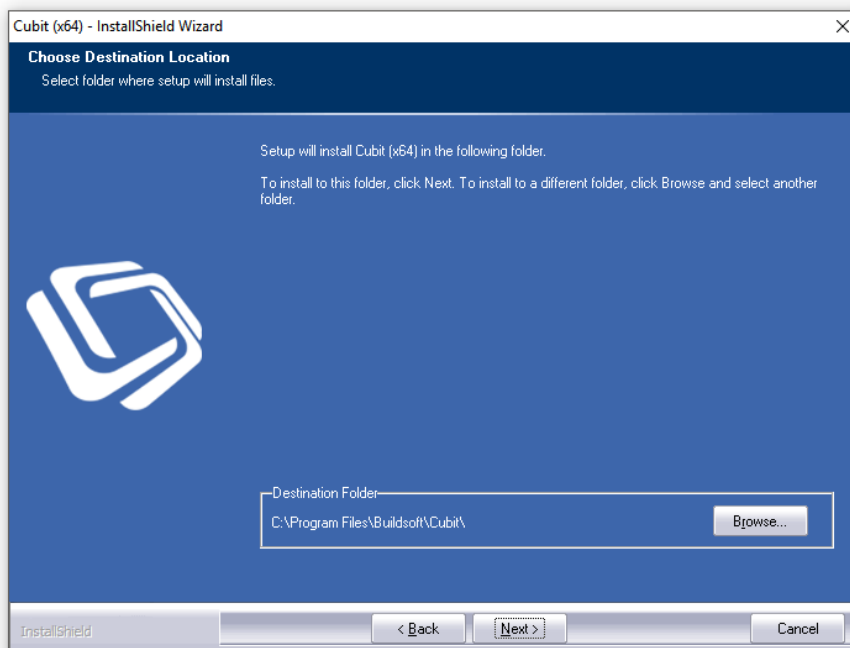
- When prompted for the **PostgreSQL** data directory it is recommended that you install this to the default location C:\Program Files\PostgreSQL\9.2. Click **Next** to continue.

*Fig 6 – PostgreSQL Data Directory*



- You can select any location for Cubit to be installed to. It is recommended that you install to the default location C:\Program Files\Buildsoft\Cubit. Click **Next** to continue.

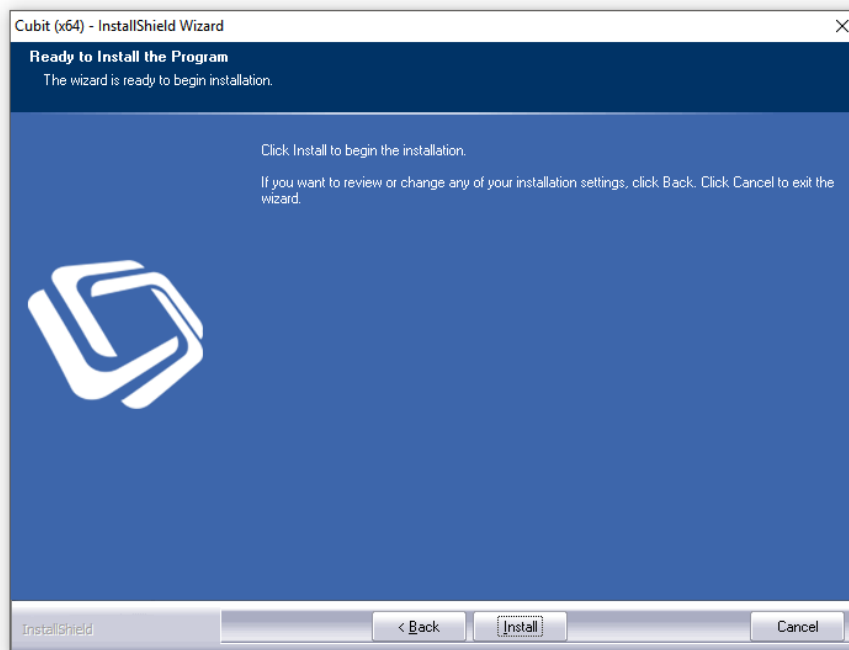
*Fig 7 – Choose Destination Location*





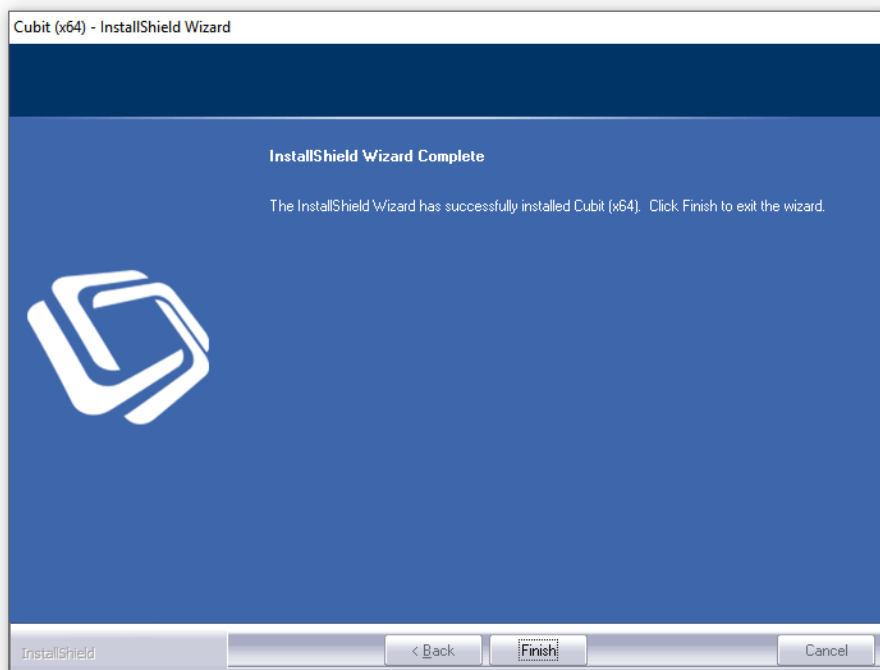
- To begin the installation, click **Install**.

*Fig 8 – Ready to Install the Program*



- You will be notified when installation is completed. Click **Finish** to close the installer window.

*Fig 9 – InstallShield Wizard Complete*



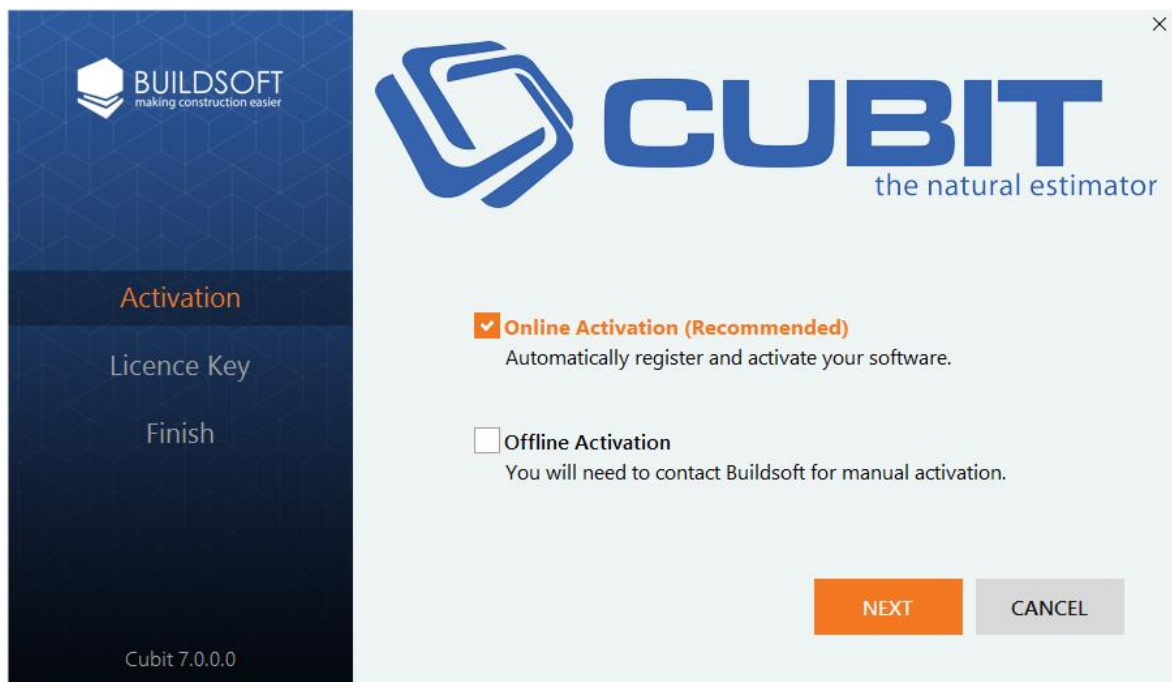
10. Using your mouse, double click your Cubit desktop icon.

*Fig 10 – Desktop Icon*



11. When registering Cubit, Online Activation is recommended because it will automatically register your Licence. You will be required to enter the **Organisation** that the Licence Key is registered to, the **Name** and **Email** of the Cubit user, then the **Serial Number**.

*Fig 11 – Register Cubit*



If you encounter a problem during installation, contact the **Buildsoft Support Team** through creating a ticket at [buildsoft.com.au/support](https://buildsoft.com.au/support) or via e-mail to [support@buildsoft.com.au](mailto:support@buildsoft.com.au)

## Software Update Guide

These instructions are to guide you through updating your Cubit or BT2 to the latest version.

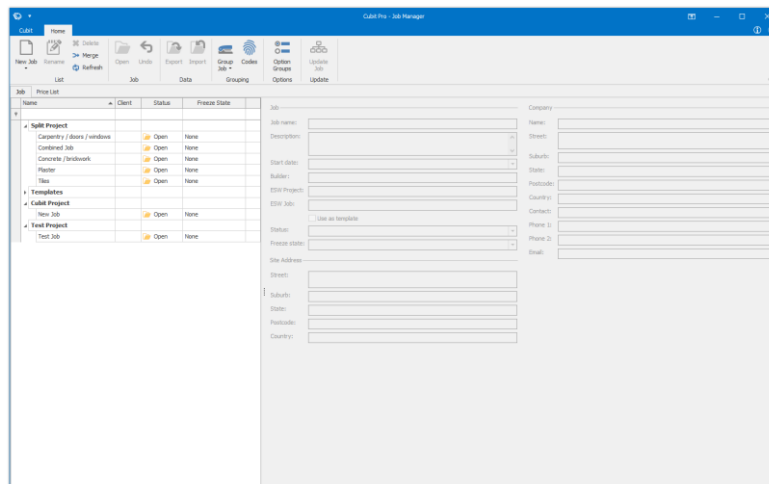
***It is strongly recommended that you backup any information in Cubit or BT2 before updating your software. Following are two ways to back up your data: exporting a Job and backing up your database.***

### Exporting a Job(s)

Exporting a job allows you to backup one or multiple jobs at once. A separate file is created for each job you export.

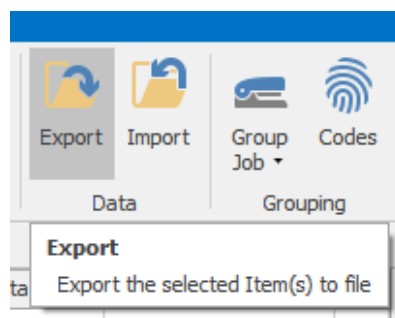
1. You can export a job or jobs from the **Job Manager** screen. This is the first screen that appears when you open Cubit.

Fig 1 – Job Manager



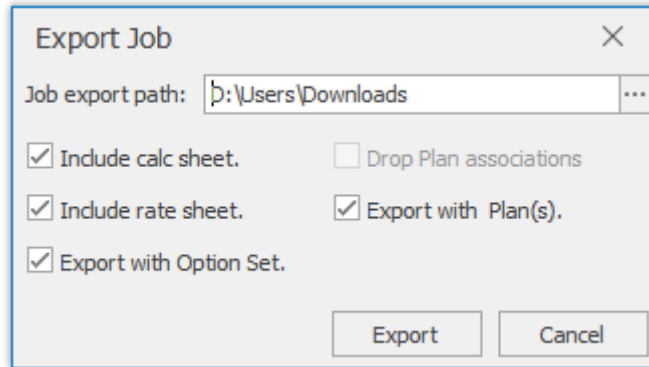
2. Select the job(s) you wish to export, then click **Export**.

Fig 2 – Export



3. In the **Export Job** window click “...” to browse a different export location. Cubit will remember the last directory the data was exported to. To export an entire job, make sure all options are checked. You can uncheck any item you wish to exclude. When ready click **Export**.

*Fig 3 – Export Job Options*



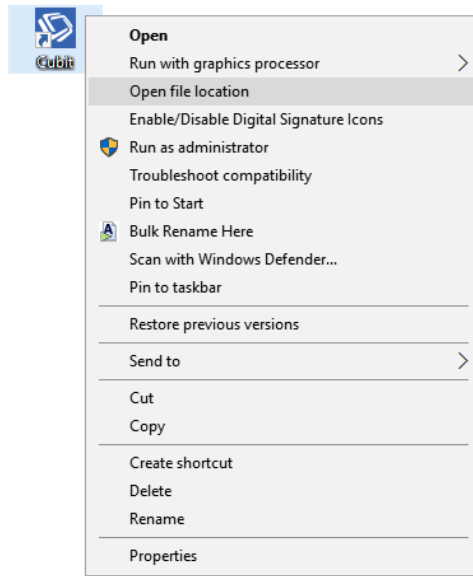
If you encounter a problem during installation, contact the **Buildsoft Support Team** through creating a ticket at [buildsoft.com.au/support](https://buildsoft.com.au/support) or via e-mail to [support@buildsoft.com.au](mailto:support@buildsoft.com.au)

## Exporting a Database

Exporting a database copies all jobs, price lists, group codes and plans. Your database can only be exported or imported in bulk.

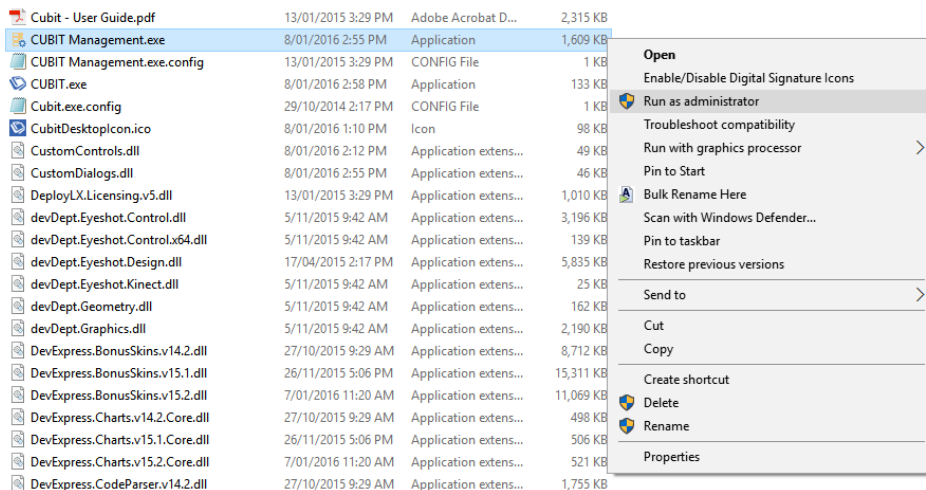
1. You export a database in the **Cubit Management Console**. This can be found where you installed Cubit. You can find it by right mouse clicking your desktop icon and selecting **Open file location** from the drop down menu.

*Fig 1 – Open file location*



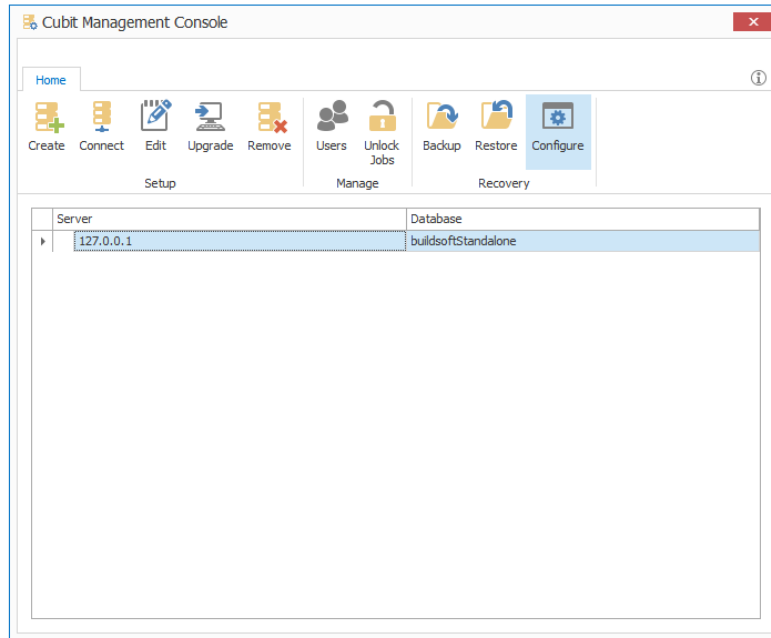
2. Find **CUBIT Management.exe** and right mouse click the icon. Select **Run as administrator** from the drop down menu to open it.

*Fig 2 – Run as administrator*



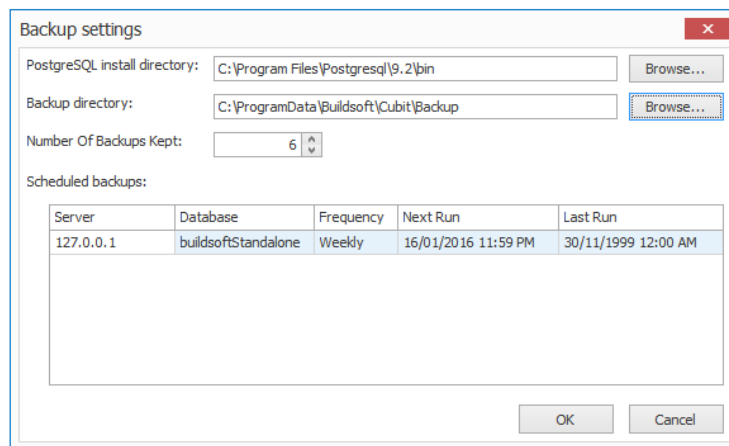
3. Click **Configure** from the **Cubit Management Console** to access your back up settings.

*Fig 3 – Cubit Management Console*



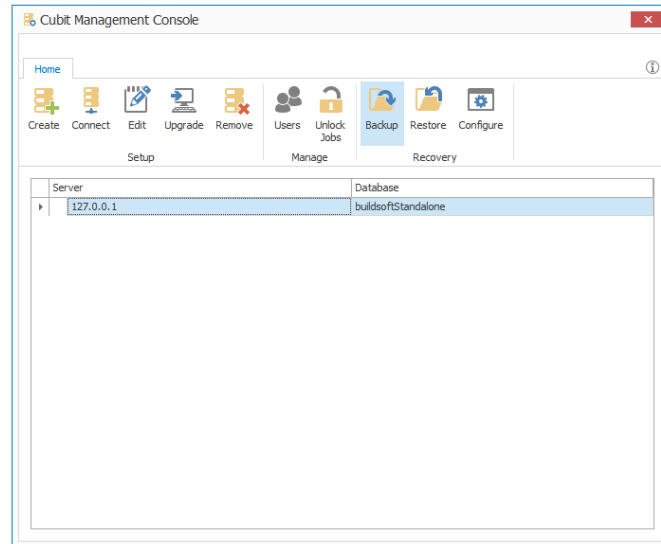
4. You will need to select where you would like your database to be exported to. Click **Browse** next to “Backup Directory:” file location and select your new backup directory, then close the window.

*Fig 4 – Backup settings*



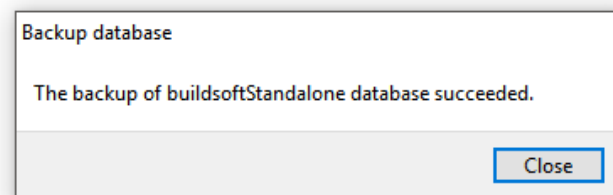
- To back up your Cubit database, click **Backup**. This may take some time, depending on how much information you have saved in Cubit.

*Fig 6 – Backup settings*



- You will be notified when the backup is completed successfully, click **Close** to finish.

*Fig 6 – Completed Backup*

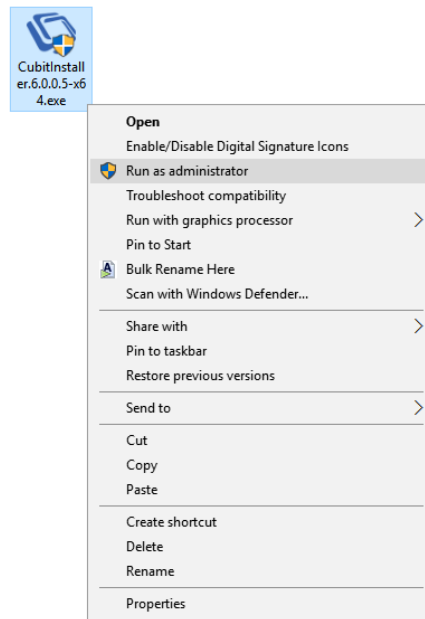


If you encounter a problem during installation, contact the **Buildsoft Support Team** through creating a ticket at [buildsoft.com.au/support](http://buildsoft.com.au/support) or via e-mail to [support@buildsoft.com.au](mailto:support@buildsoft.com.au)

## Update Installation Guide

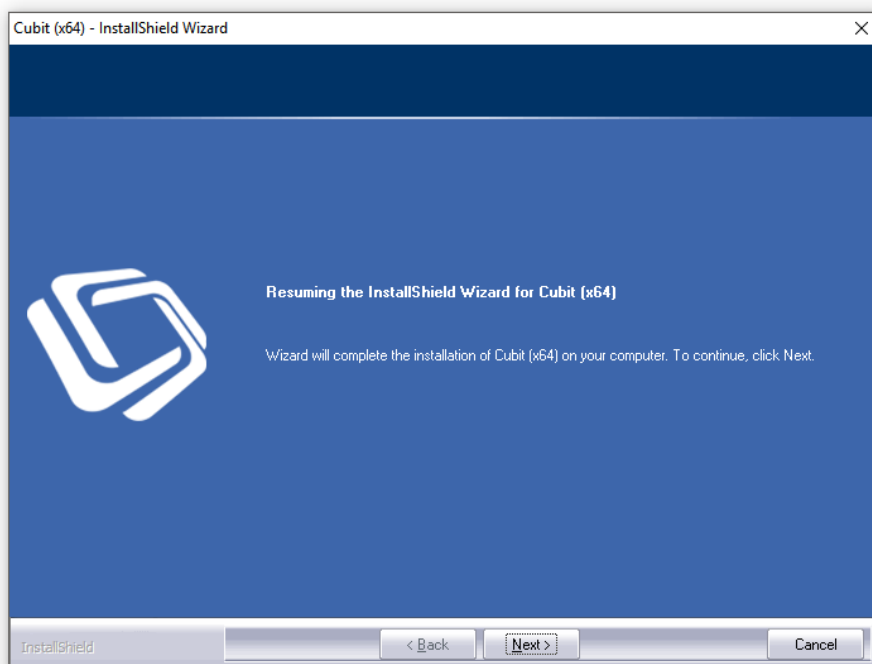
1. Right mouse click on the desktop icon and select **Run as administrator** to open the installer.

*Fig 1 – Run as Administrator*



2. The first page of the installer is the welcome page. Click **Next** to continue.

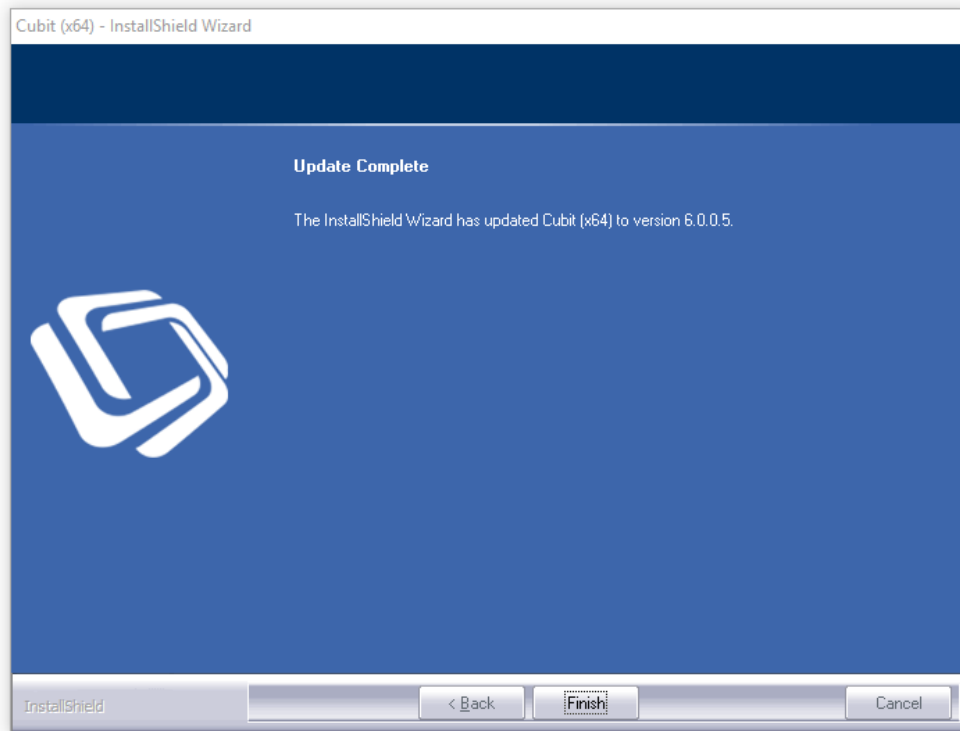
*Fig 2 – Installer Welcome Screen*





3. You will be notified when your software is updated. Click **Finish** to complete installation.

*Fig 3 – Installer Welcome Screen*



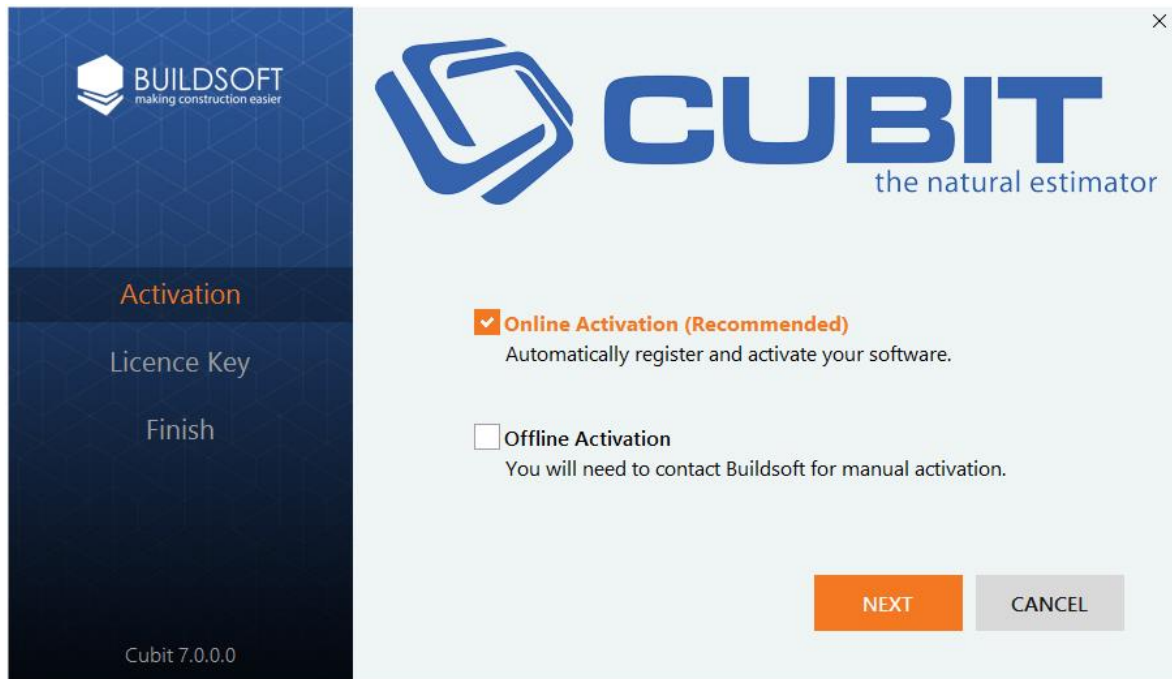
4. Using your mouse, double click your Cubit desktop icon.

*Fig 4 – Desktop Icon*



- When registering Cubit, Online Activation is recommended because it will automatically register your Licence. You will be required to enter the **Organisation** that the Licence Key is registered to, the **Name** and **Email** of the Cubit user, then the **Serial Number**.

Fig 5– Register Cubit



If you encounter a problem during installation, contact the **Buildsoft Support Team** through creating a ticket at [buildsoft.com.au/support](https://buildsoft.com.au/support) or via e-mail to [support@buildsoft.com.au](mailto:support@buildsoft.com.au)