



CUBIT

the natural estimator

Standalone Installation Guide

7 c b h Y b h g Æ

6 Yz f Y M ci ` G U f h

&

System Requirements

2

Understanding your licence

3

G H b X U c b Y ` Æ g U ` U j c b

*.

Activate Cubit

11

Database Backup Configuration

12

I d X U j b [` 9 I] g h b [` Æ g U `

%`

Exporting a Job

15

Exporting a Database

17

Update Software

20

Activate Cubit

21



6Y Zc fY 'Mc i 'GhU fhÆ

This Installation Guide is intended for the installation of a standalone licence of Cubit.

You will be required to download the install files. If you have not received the install files, they can be obtained from Buildsoft Support anytime by submitting a Ticket via buildsoft.com.au/support.

System Requirements

	Minimum	Recommended
Intel Processor (or AMD equivalent)	Intel Dual Core 1.86 GHz	I7 2.6 GHz
Memory	4 GB Ram	8-16 GB Ram
Dedicated Graphics Card	256 MB Ram. Supporting Open GL 2.0 or higher	2 GB Ram. Supporting Open GL 2.0 or higher
Hard Drive Space	1 GB free space	4 GB free space

Supported Operating Systems (32bit and 64bit): Windows Server 2008 or greater for server installations or Windows 7 Service Pack 1 or greater for desktop installations.

The **Minimum** and **Recommended** specifications are guidelines, if dealing with large plans and models you may need to exceed the recommended specification to use them.

If you are concerned with performance, contact the **Buildsoft Support Team** through creating a ticket at buildsoft.com.au/support or via e-mail to support@buildsoft.com.au

IMPORTANT:

[You cannot revert to a previous version of Cubit.](#)

[It is strongly recommended that you backup information in Cubit before proceeding with the installation process.](#)

License Types

There are a variety of different types of licenses available for Cubit that provide flexibility of use tailored across single users, multiple users and larger enterprise installations. This section provides information on how to setup your license.

You will have already decided on one of two ways to use Cubit; either you have chosen to **subscribe** to it, or **buy** it.

Subscription

A **Cubit subscription** offers the software as a service for you to use, and includes access to the extensive takeoff and estimating features, software updates, major upgrades, and access to technical support.

You will receive an email letting you know your subscription has been activated. Following this, you can then install and activate the software on your device.

License

Buying a Cubit licence, as opposed to a subscription, gives you access to the software; and your first purchase will include 12 months complimentary Software Assurance cover.

License Types

There are three licence types of Cubit, **Standalone**, **Client/Server Network**, and **Terminal Server Network**.

Standalone licence

The **Standalone licence** is designed to be used on any independent/standalone device.

Cubit will be installed on a device by choosing the **Standalone** option and then registered with the Standalone licence serial key provided by Buildsoft.

All the jobs created will be saved into a local database on that device and will not be visible to any other Cubit users (unless manually shared using the export/import functionality).

A Standalone licence can be either be **Floating** or **Fixed**.

Floating Licence

A **Floating Licence** is not restricted to a single user on a single device. You may install Cubit on multiple devices, however your licence can only be active on one device at any one time.

Releasing the Licence

In order to move from one computer to another you will need to release the licence. When you enable the **Release licence when exiting** option in the **Cubit Options** the Cubit licence will automatically be released every time you exit Cubit. The software will automatically reactivate when you open Cubit again.

Note: You will NOT need to enter the activation details when you start Cubit again.

Fixed Licence

A **Fixed Licence** is restricted to a single user of a computer. If you wish to use Cubit on a different device you will need to uninstall it.

Client/Server Network Licence

The **Client/Server Licence** is designed to be used in a network environment where multiple devices connect to a common database installed on your nominated Cubit Server.

The Cubit client will need to be installed on the user's device by choosing the **Shared Network** option during installation. Once installed, Cubit will need to be registered with a network licence serial key provided by Buildsoft. Any jobs created will be saved into the database on the server and will be visible to other Cubit users on your nominated server.

Terminal Server Network Licence

The **Terminal Server** licence is designed for use on a terminal or Citrix server where multiple users will be logging into the server to use Cubit. Cubit will need to be installed on the server by choosing the Standalone install option and then registered with the terminal server licence to allow multiple connections. All the data will be saved into a local database on the server and will be visible to other Cubit users logged into the terminal or Citrix instance.



Activation Methods

There are two ways Cubit can be activated on your device, Online Activation or Offline Activation.

Online Activation

Online Activation is the default and recommended method for activation, it will automatically register and activate Cubit for immediate use.

Note: An active internet connection is required.

Offline Activation

Offline Activation is to be used when you have no Internet connection. It will require an additional manual activation code which can be obtained by contacting the Buildsoft team. When using Cubit offline you will not be able to use Release license when exiting option.

Note: This method of activation is not available for Cubit subscriptions or network installations.

To upgrade from a Fixed Licence to a Floating Licence, contact the Buildsoft Sales Team.

GhU b X U `c b Y ' ð ghU `U h]c b Æ

These instructions will guide you through installing Cubit onto your computer for the first time.

Note: If you have Cubit already installed on the device then, please refer to [Updating Existing Install](#).

1. Double mouse click to open the installer.

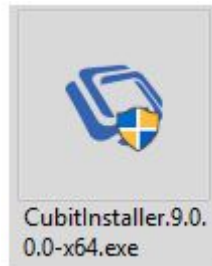


Fig 1 – Cubit Installers

- U'** You may encounter a prompt to install **Microsoft Visual C++ Redistributable Package**. If prompted, click **Install** to continue your installation.

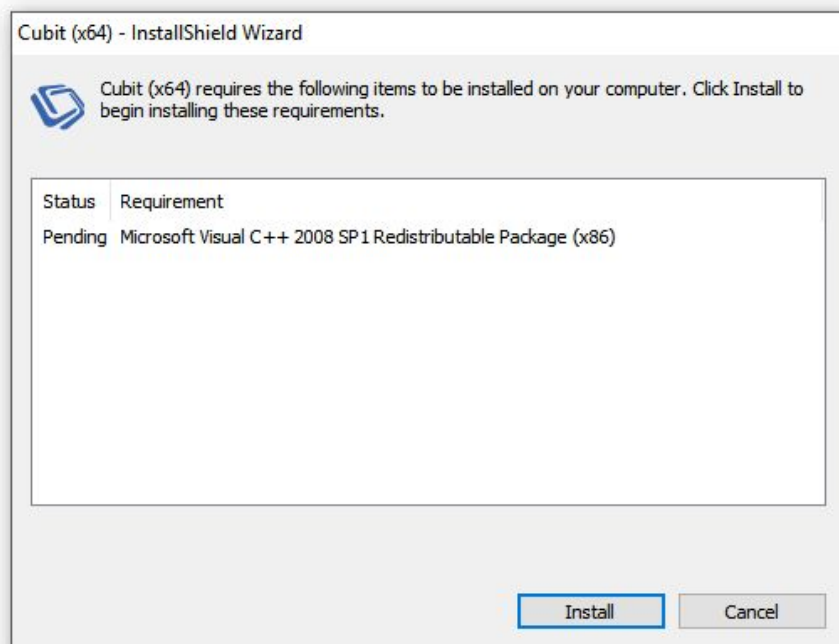


Fig 1a – Microsoft Visual C++ Redistributable Package Installer

- The installation will begin with the welcome page. Click **Next** to continue.

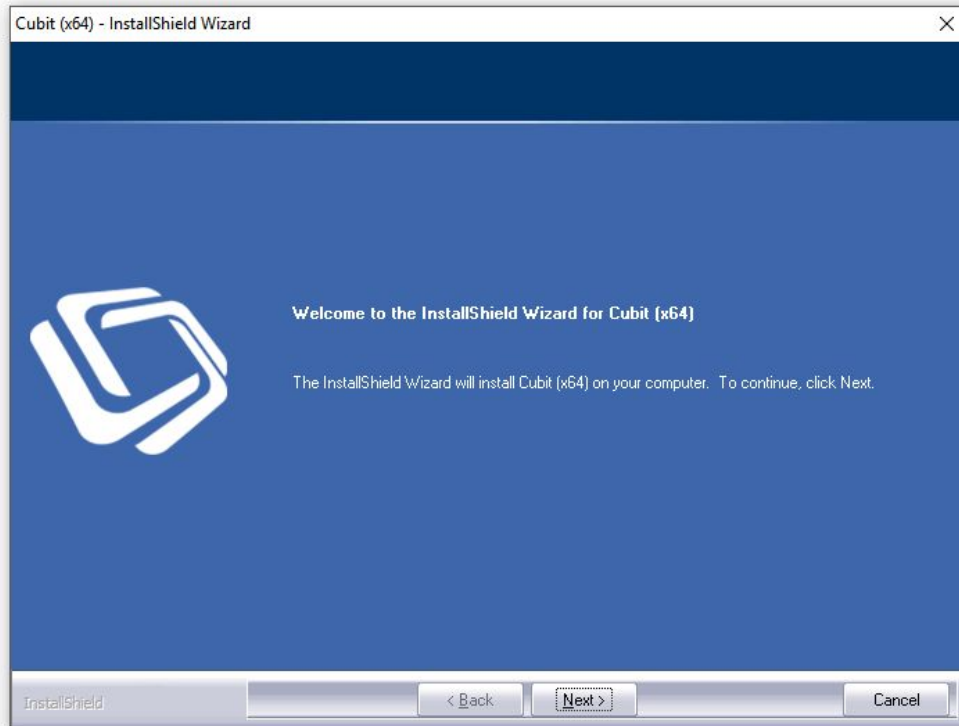


Fig 2 – Installer Welcome Screen

- Please read the **Cubit Licence Agreement** before selecting **I accept the terms of the license agreement**. Click **Next** to continue.

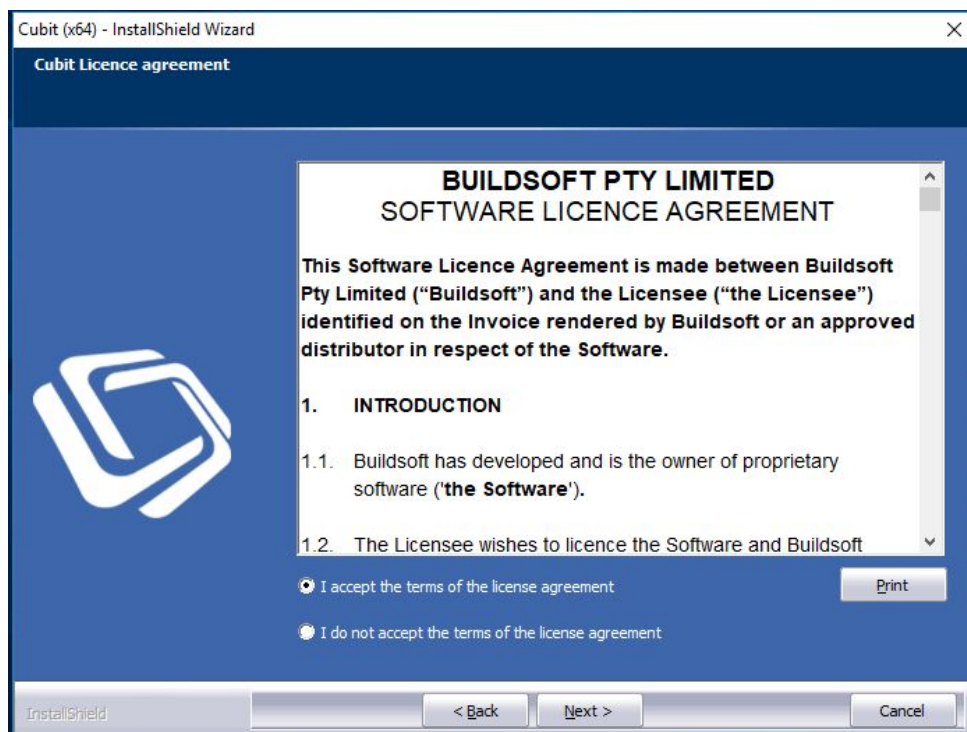


Fig 3 – Cubit Licence Agreement

- By default, the **Standalone** option is selected. Click **Next** to continue.

If you are running the installer for an older version of Cubit, this screen will look different.

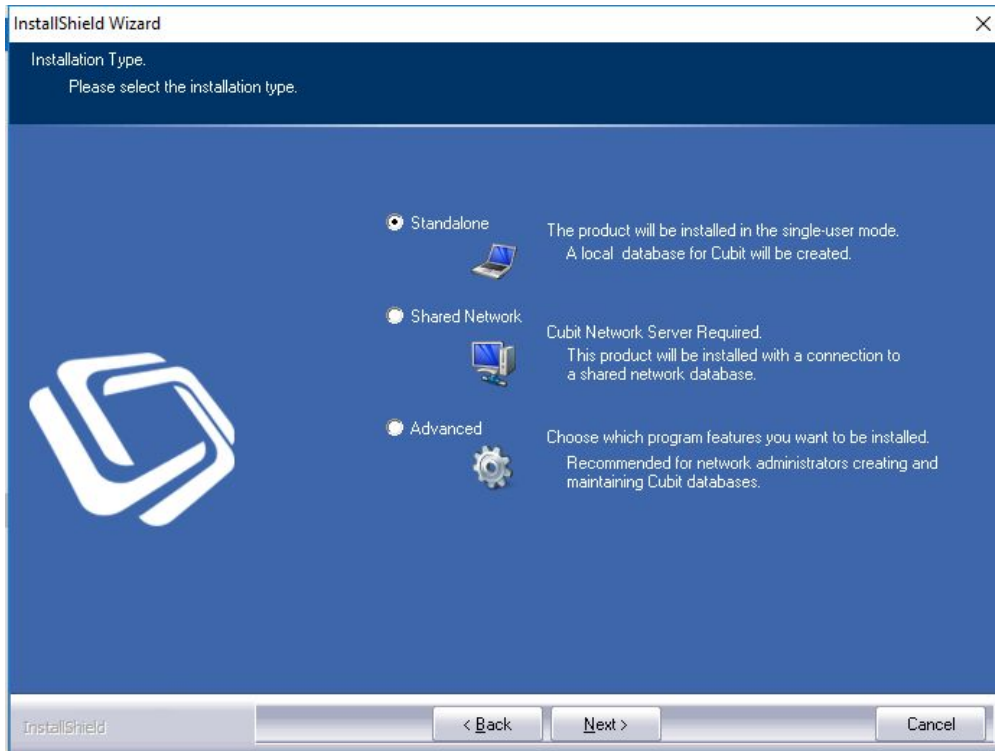


Fig 4 – Installation Type

- You can select any location for Cubit to be installed to. It is recommended that you install to the default location C:\Program Files\Buildsoft\Cubit. Click **Next** to continue.

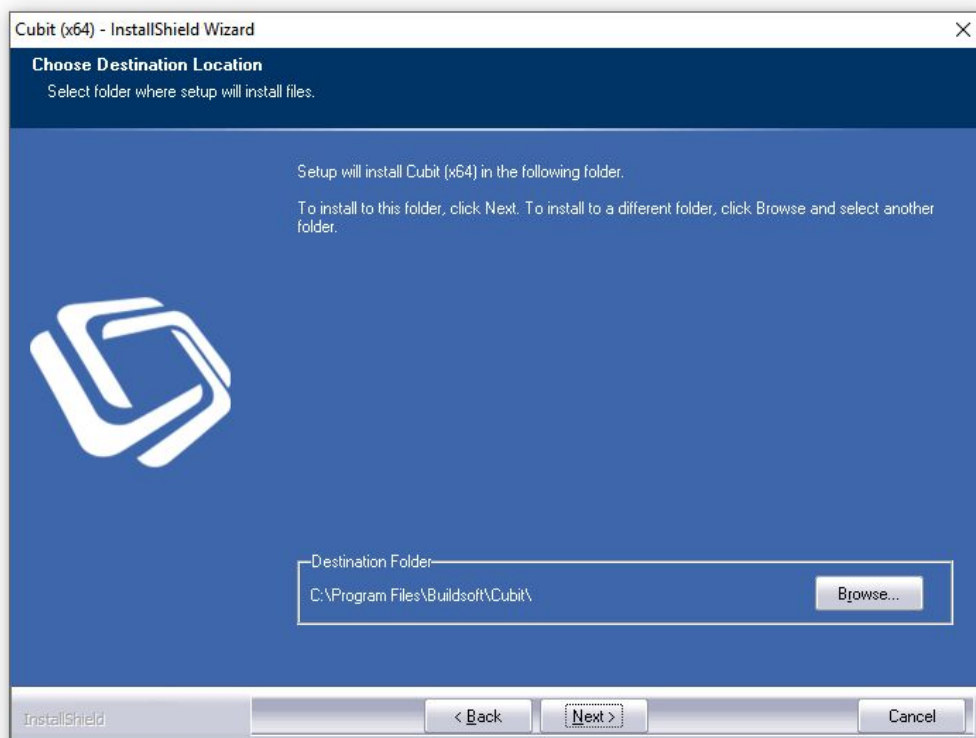


Fig 5 – Choose Destination Location

- You will be prompted to confirm the **PostgreSQL** install location. Click **Browse** if you wish to change location, however, it is recommended that you install to the default location **C:\Program Files\PostgreSQL\10**. Click **Next** to continue.

AaZ <nyf xZ@ 1fZxylol UU'by'NfMfMfZ', kqat | U6'fZxylol 'a' M'X'Mh'fZ'nl jt^AaZ njXZxt | U6'fZxylol 'b y(N)Zxy' ,, ljj y(ljj 'b y(N) 'aZ' <nyf xZ@ 1fZxylol 'a'U'

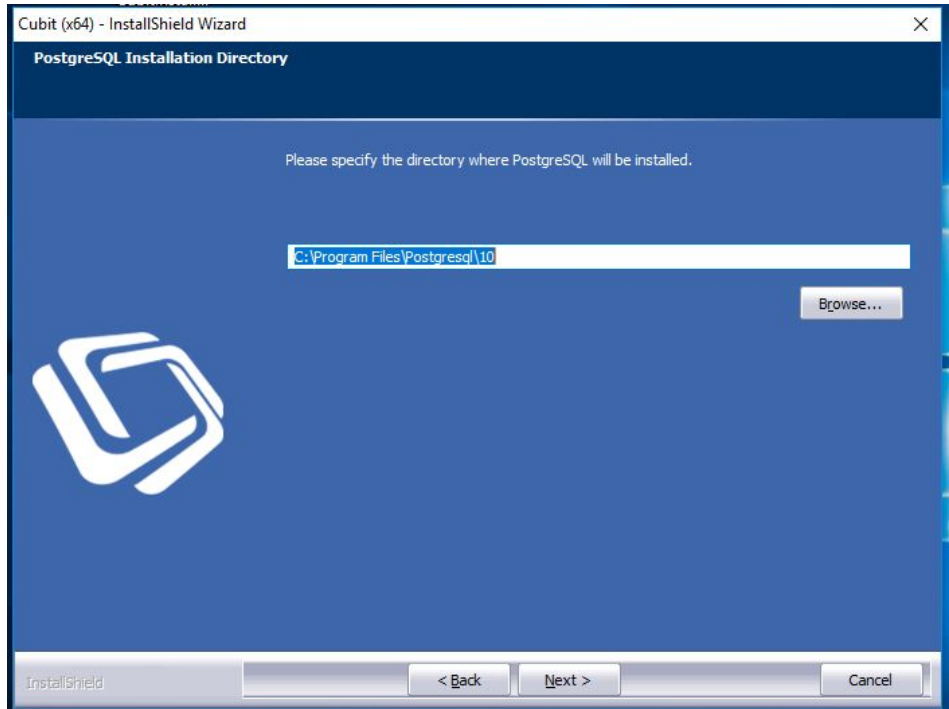


Fig 6 – PostgreSQL Installation Directory

- You will be asked to confirm the **PostgreSQL** data location, it is recommended that you install to the default location **C:\Program Files\PostgreSQL\10\data**. Click **Next** to continue.

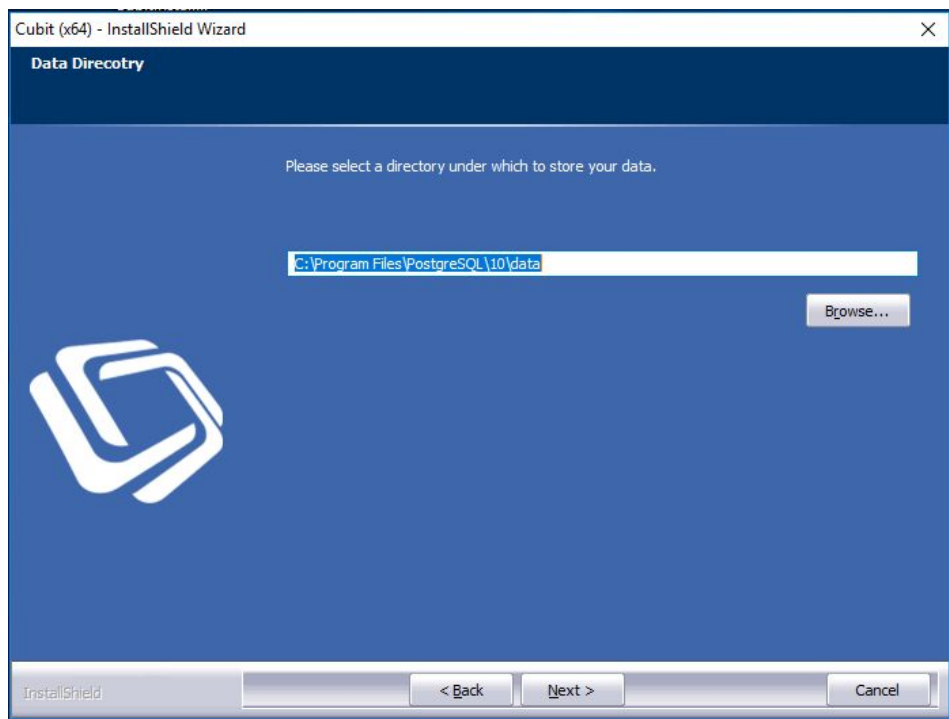


Fig 7 – PostgreSQL Data Directory

8. It is now ready to begin the installation, click **Install** to proceed.

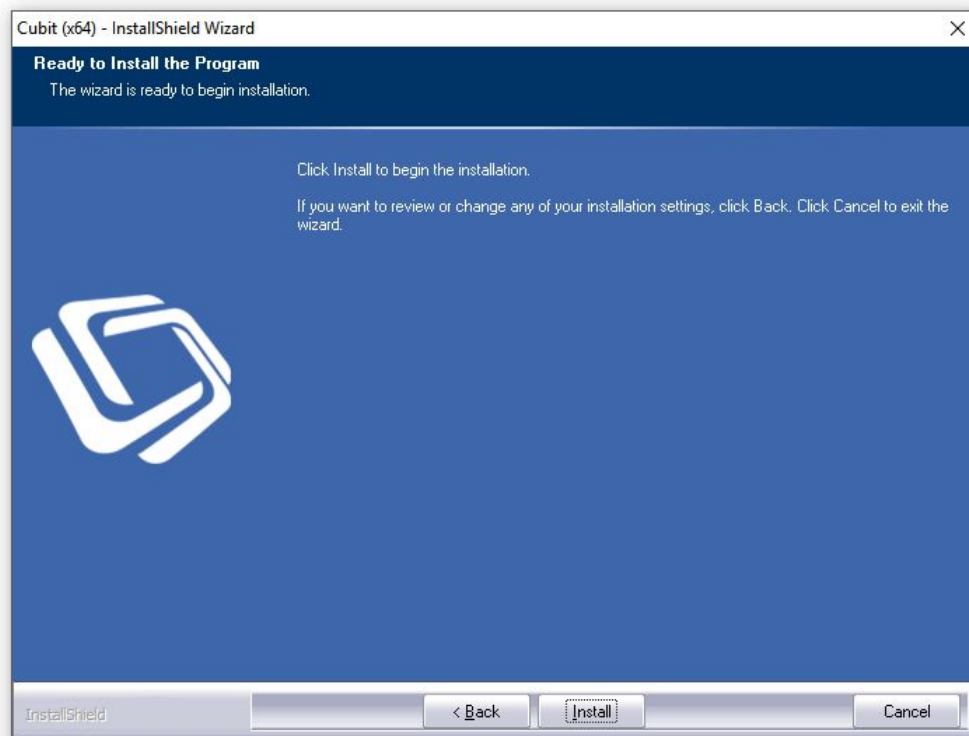


Fig 8 – Ready to Install the Program

9. You will be notified when the installation is completed. Click **Finish** to close the installer window.

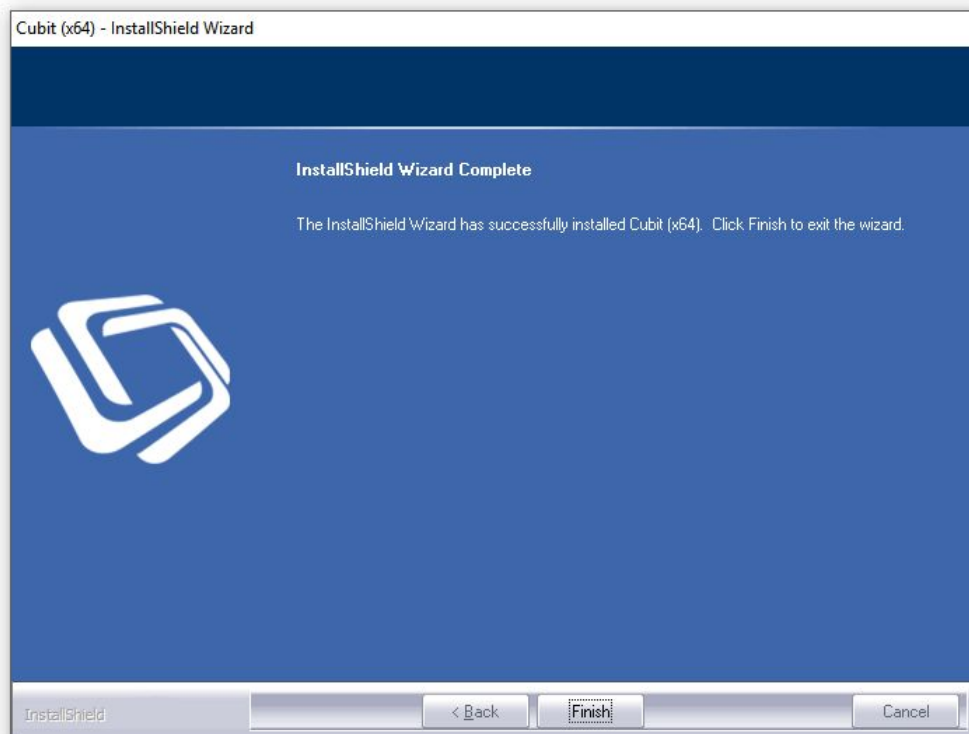


Fig 9 – Installation Complete

5 Whjj U hY ' 7 i V]hÆ

- Using your mouse, double-click your Cubit desktop icon.



Fig 10 – Desktop Icon

- You will be required to enter the **Name** and **Email** of the Cubit user, **Company** name the licence Key is registered with, and then the **Licence Key**.

f | Uk , , ljj XbyujM'N ✓ MNB y{ {aZ '1bZI yZ'QZt'nl jt' , aZl ' |yb ` 'M'N'X'Zt'S'N'J'n , b ` 'tn' '{n'V'BM '3Z. { '{n' 'N'X'b'M'Z {aZ'j'b'ZI VZ'a



Fig 11 – Register Cubit

- When registering Cubit, select Online Activation. This will automatically register your licence.

5_jb Z'' V'g'M'bl 'y' | I M'N'W'J'Z' _nx'M'y/ U'Y'X'Z'X'j'b'ZI VZ'a

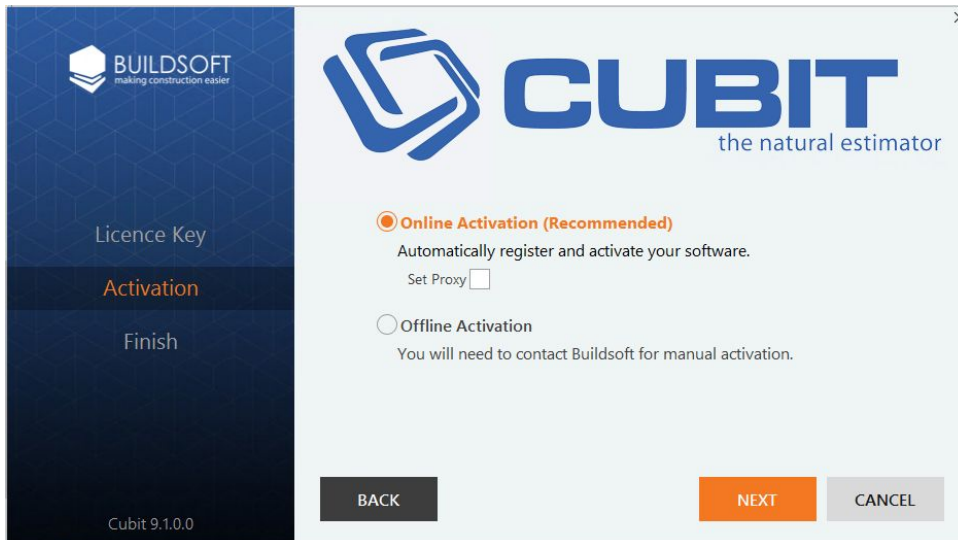


Fig 12 –Online Activation

D

8 U h U V U g Y ' 6 U W _ i d ' 7 c b Z [i f U h] c b Æ

1. You export a database in the **Cubit Management Console**. This can be found where you installed Cubit. You can find it by right mouse clicking your desktop icon and selecting **Open file location** from the drop-down menu.

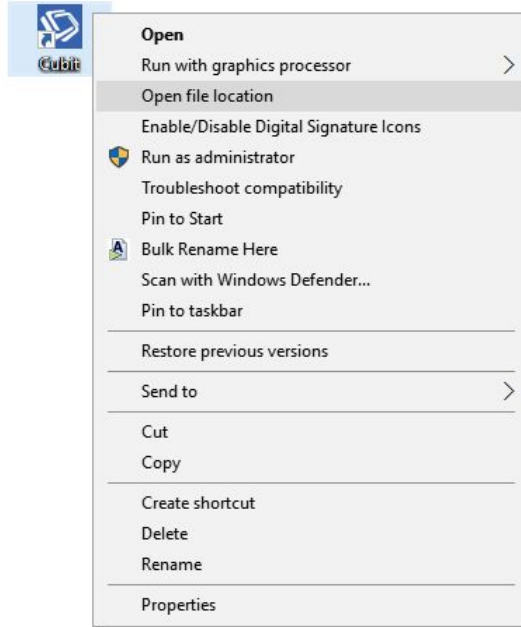


Fig 13 – Open file location

2. Find **CUBIT Management.exe** and right mouse click the icon. Select **Run as administrator** from the drop-down menu to open it.

?| | b ` M y N k b b y x M n x b y l Z Z X Z X n l j t , a z l ' t n | ' Z Z X { n \ h l _ b | x Z { a Z X M N W Y Z U V W | u ° A a Z u x n ` x M k W M l ' U Z x | l ' n x k N j t { n | y Z n { a Z x t | U k _ Z M | x Z y S j b Z k M I M b ` ' y Z x j n ` b y M I X ' | j n M b ` ' n U y M I X < x b Z ' b y c y '

Fig 14 – Run as administrator

3. In the **Cubit Management Console**, the installed PostgreSQL **buildsoftStandalone** database will be selected by default. Click **Configure** to access your backup settings.

Fig 15 – Cubit Management Console

4. Set the directory paths by clicking **Browse** or by typing the path as below.

PostgreSQL Install directory: C:\Program Files\Postgresql\9.2\bin **(If not changed during installation)**

Backup directory: C:\ProgramData\Buildsoft\Cubit\Backup

AaZ`XM\NUNyZ UNM | u'uMla VNI 'tn| Xb_ZxZl { 'Mj'uZx{aZl ZZxy''<jZMjZ'k MIZ y| xZ {aZ'UNM | u'XbZV{nxt'Z. by'y' MIX{aZ'uMla'by'fVjX'a'

Fig 16 – Backup settings

- Click the **Frequency** drop-down box to select how often you want to backup your database. You can pick from **Daily**, **Weekly** or **Monthly**.

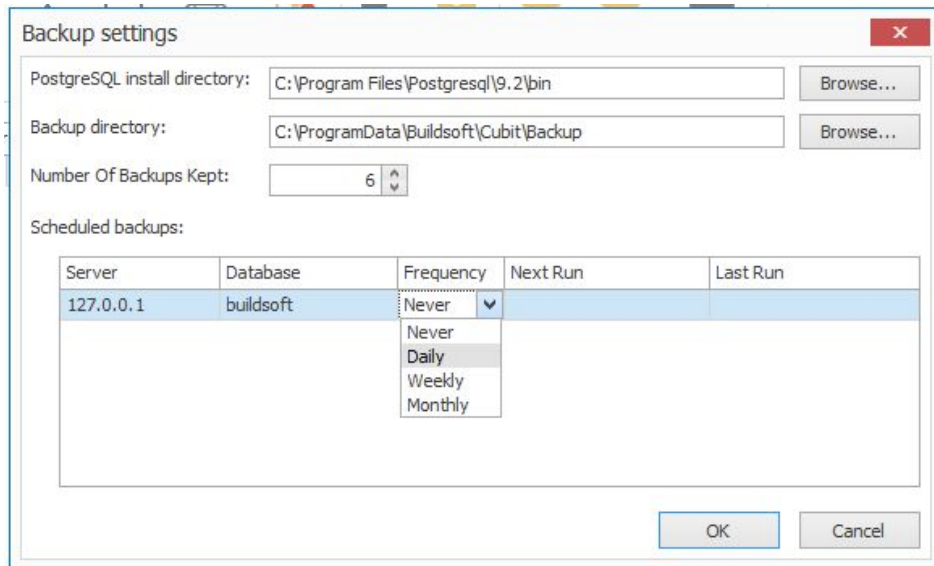


Fig 17 – Setting the Frequency

- Select the time and date you want the back up to occur by clicking in the empty box under **Next Run**.

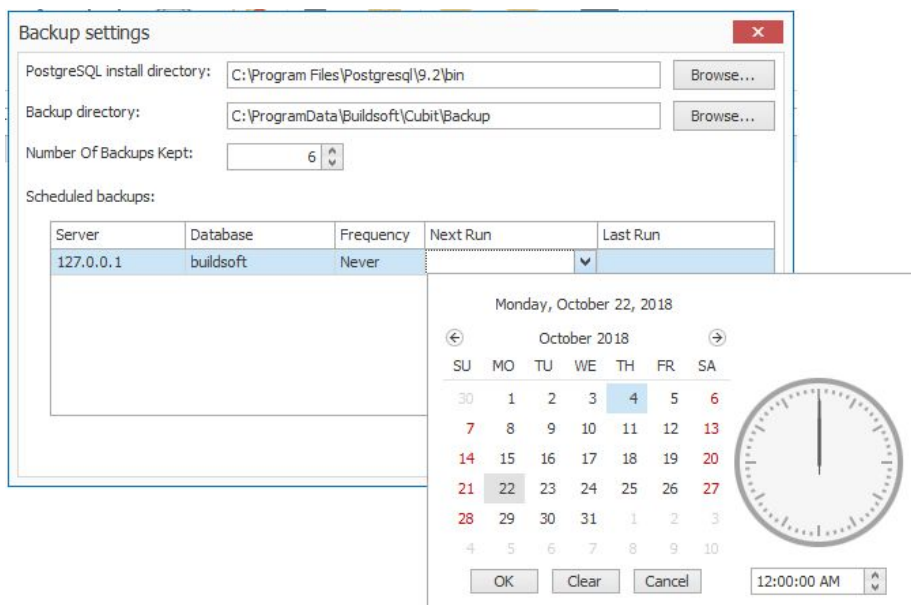


Fig 18 – Set Date Time

- If you are happy with the configuration, click **OK** to save your settings.

D

I d X U h]b ['9l]gh]b [' ð ghU ``

These instructions are to guide you through updating your Cubit to the latest version.

It is strongly recommended that you back up any information in Cubit before updating your software. Following are two ways to back up your data: exporting a Job and backing up your database.

9l d c fh]b ['U ' >c V Æ

Exporting a job allows you to back up one or multiple jobs at once. A separate file is created for each job you export.

1. You can export a job/s from the **Job Manager** screen which is the first screen that appears when you open Cubit.

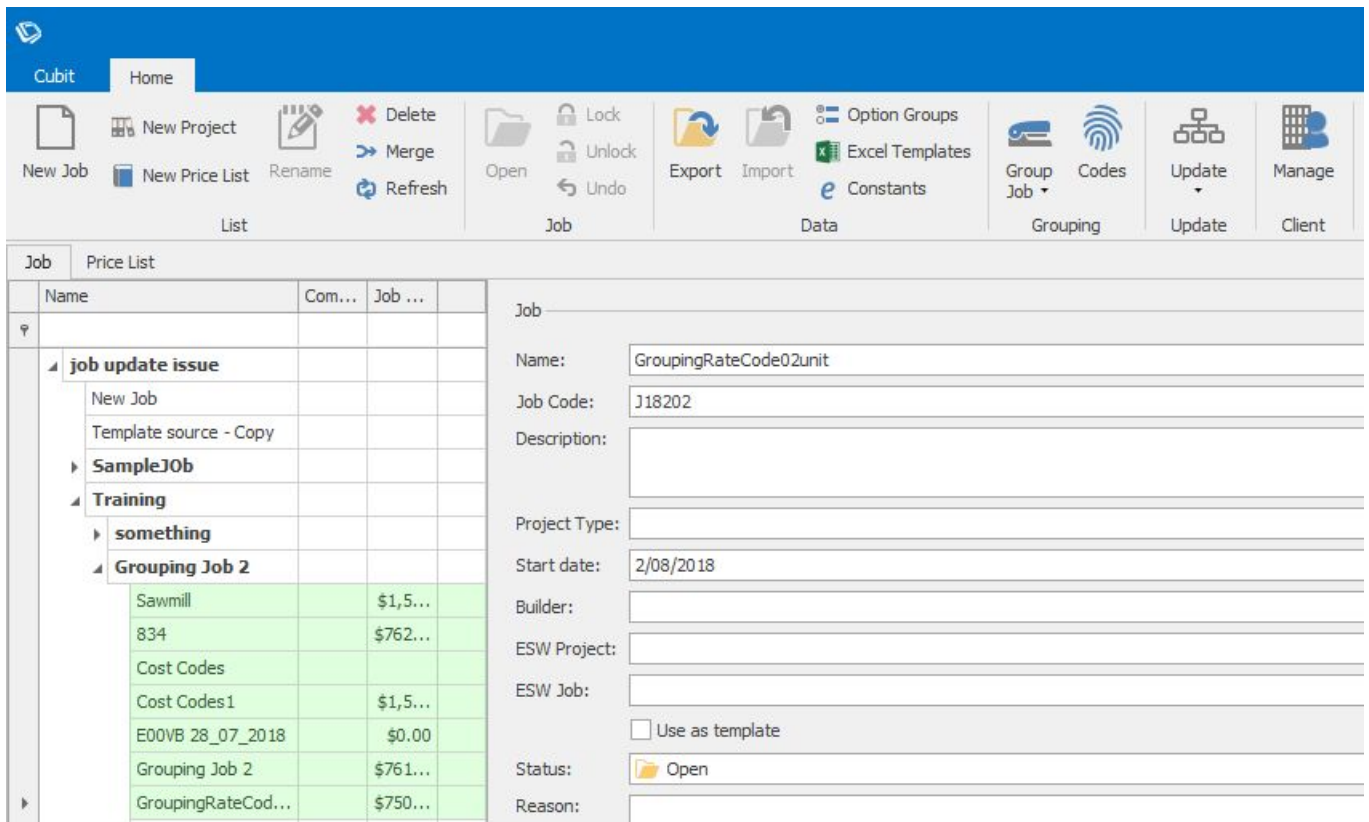


Fig 19 – Job Manager

2. When you have selected the job/s you wish to export, click **Export**.

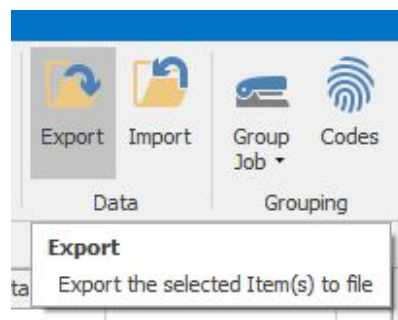


Fig 20 – Export

3. In the **Export Job** window click “...” to browse a different export location. Cubit will remember the last directory the data was exported to. To export an entire job, make sure all options are checked. You can uncheck any item you wish to exclude. When ready click **Export**.

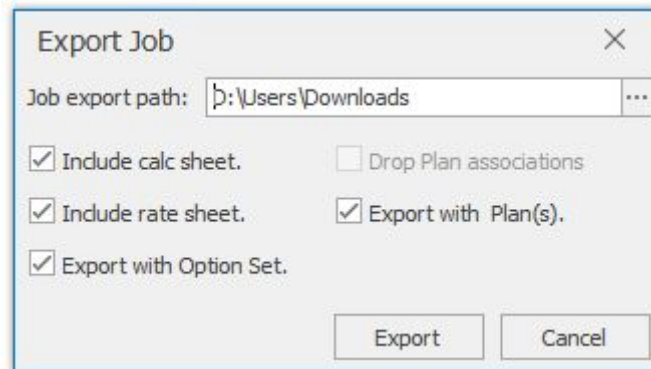


Fig 21 – Export Job Options

9| d c fh]b ['U '8 U hUV U gY Æ

Exporting a database copy of all jobs, price lists, group codes and plans. Your database can only be exported or imported in bulk.

1. You export a database in the **Cubit Management Console**. This can be found where you installed Cubit. You can find it by right mouse clicking your desktop icon and selecting **Open file location** from the drop-down menu.

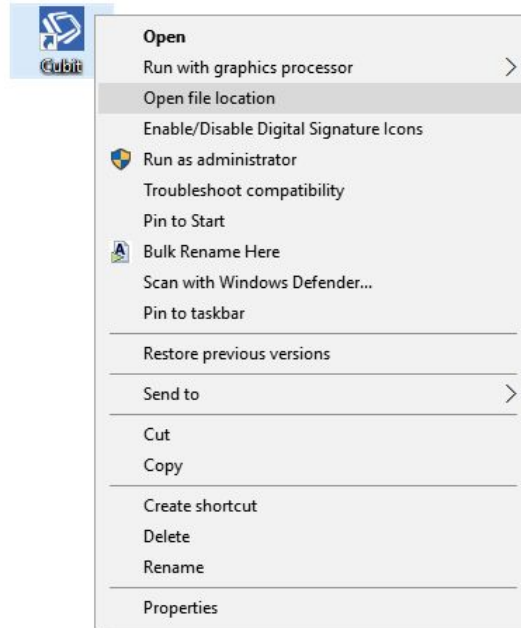


Fig 22 – Open file location

2. Find **CUBIT Management.exe** and right mouse click the icon. Select **Run as administrator** from the drop-down menu to open it.

Fig 23 – Run as administrator

3. In the **Cubit Management Console**, the installed PostgreSQL **buildsoftStandalone** database will be selected by default. Click **Configure** to access your backup settings.

Fig 24 – Cubit Management Console

4. Set the directory paths by clicking **Browse** or by typing the path as below.

PostgreSQL Install directory: C:\Program Files\Postgresql\9.2\bin **(If not changed during installation)**

Backup directory: C:\ProgramData\Buildsoft\Cubit\Backup

*AaZ`XM\NUNjZ`UNNI | u`uMta`WNI`tn|`Xb_ZxZI`{`Mj`uZx`{aZ`I`ZZXy`^`<jZMjZ`k`NIZ`y|`xZ`{aZ`UNNI | u`XbzV`{nxt`Z.`by`y`
 MIX`{aZ`uMta`by`fVjbx`^`*

Fig 25 – Backup settings

- To back up to the previous window, and click **Backup**. This process may take some time to finish, depending on how much information you have saved in Cubit.

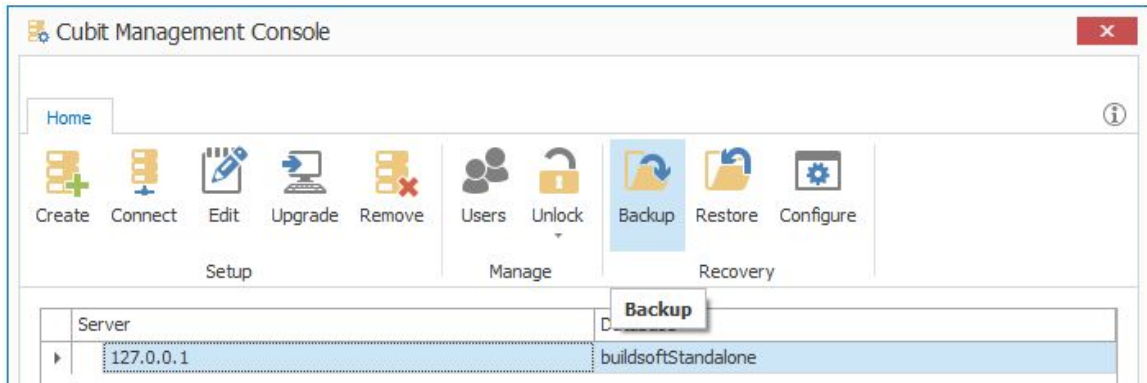


Fig 26 – Backup settings

- You will be notified when the database has been backed up successfully. Click **Close** to finish.

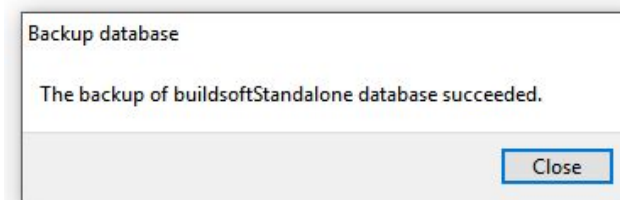


Fig 27 – Completed Backup

*_tn| ZI Vh| I {ZxIMuxnUjZk X| x0` b y{NjMlml Svhl {NW{aZ Buildsoft Support Team {axn| ` a VxZM|b ` M
 {bM Z{M| buildsoft.com.au/support nxjAMZ'k Nj{n support@buildsoft.com.au

Ð
I d X U h Y ' G c Z h k U f Y Æ

Follow the instructions below to update the software to a newer version.

1. Double click on the downloaded installers to start the update.

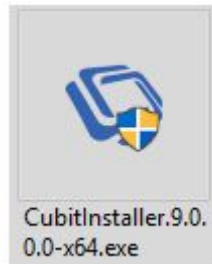


Fig 28 – Installer

2. The first page of the installer is the welcome page which will show you what version you have installed and the version you will be installing. Click **Next** to continue.

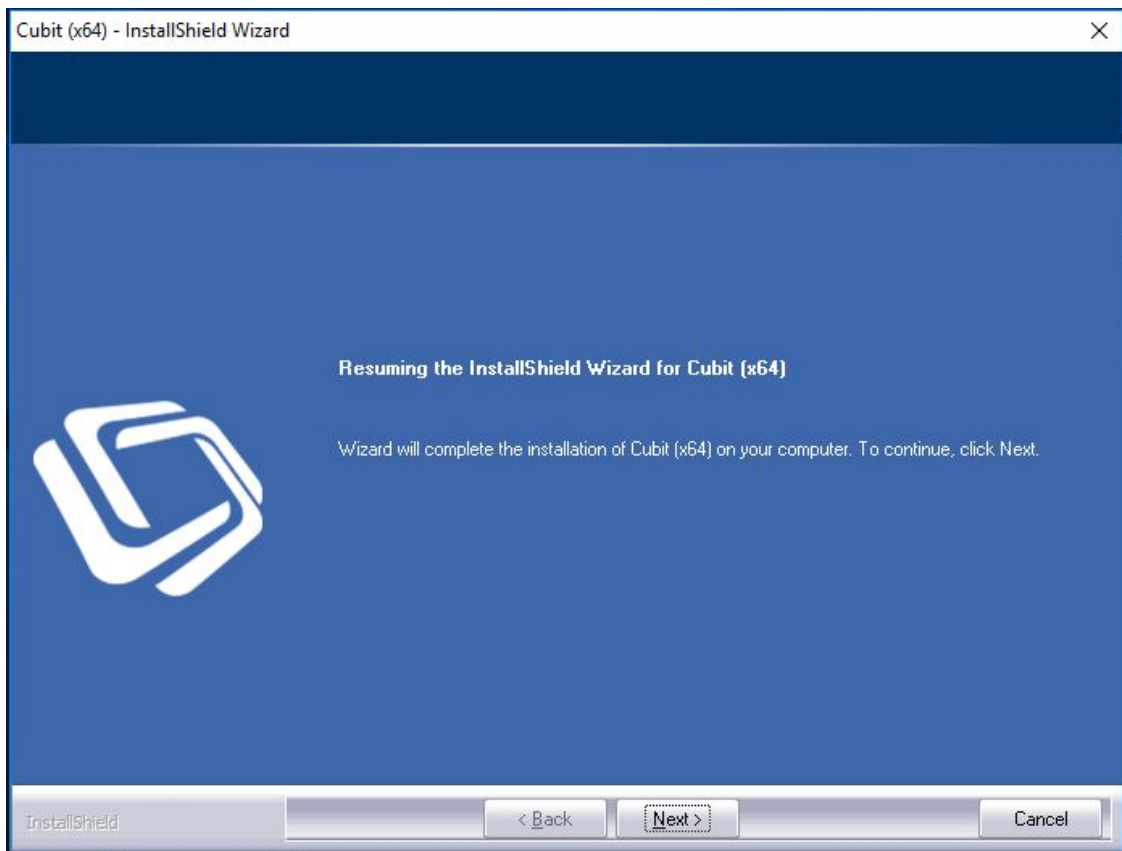


Fig 29 – Installer Welcome Screen

3. You will be notified when your software is updated. Click **Finish** to exit.

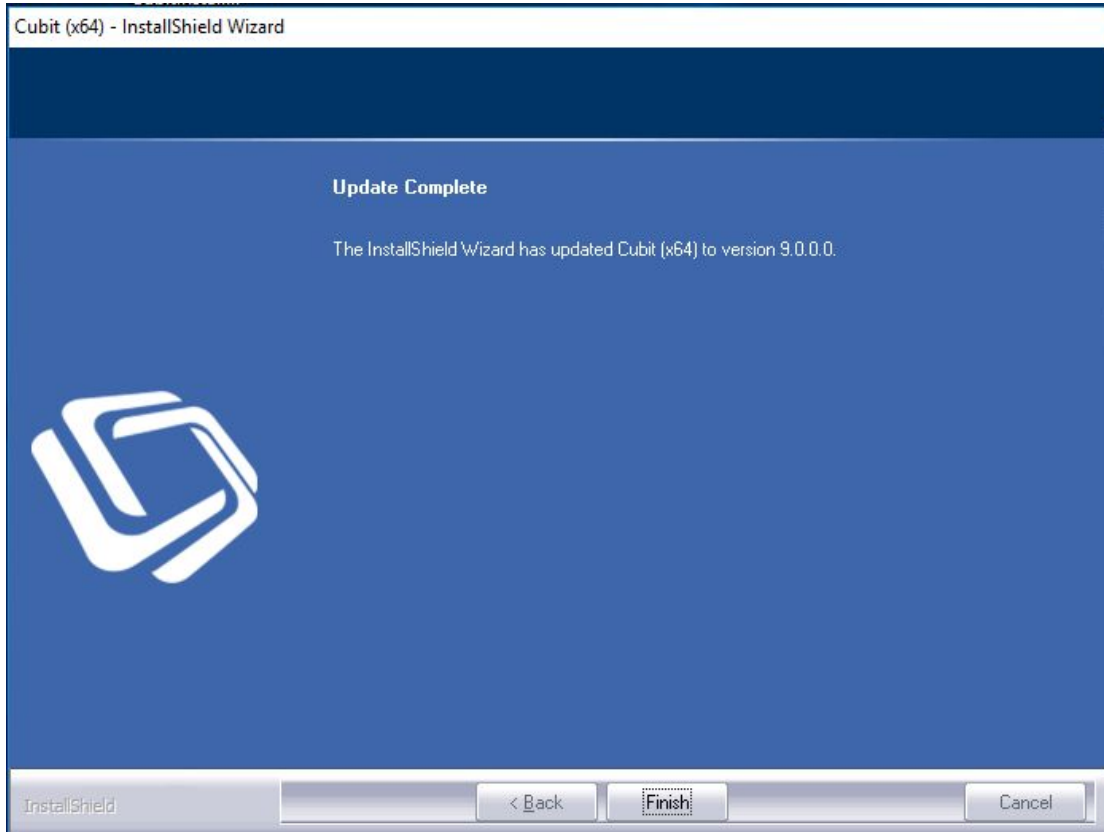


Fig 30 – Update Complete

5. When a major update is done, Cubit needs to be reactivated with a new licence key. The new licence/s details would have been provided in the software update email sent.

Only when a major update is done, Cubit needs to be reactivated with a new licence key. The new licence/s details would have been provided in the software update email sent.

Please refer to the [Activate Cubit](#) for the detailed steps.

*_tn| ZI Vh| I {ZxMuxnUjZk X| x0` b y{NjMlml Svhl {NW{aZ Buildsoft Support Team {axn| ` a VxZMlb` M {bM Z{M} buildsoft.com.au/support nxjAMZ'k N0}{n} support@buildsoft.com.au